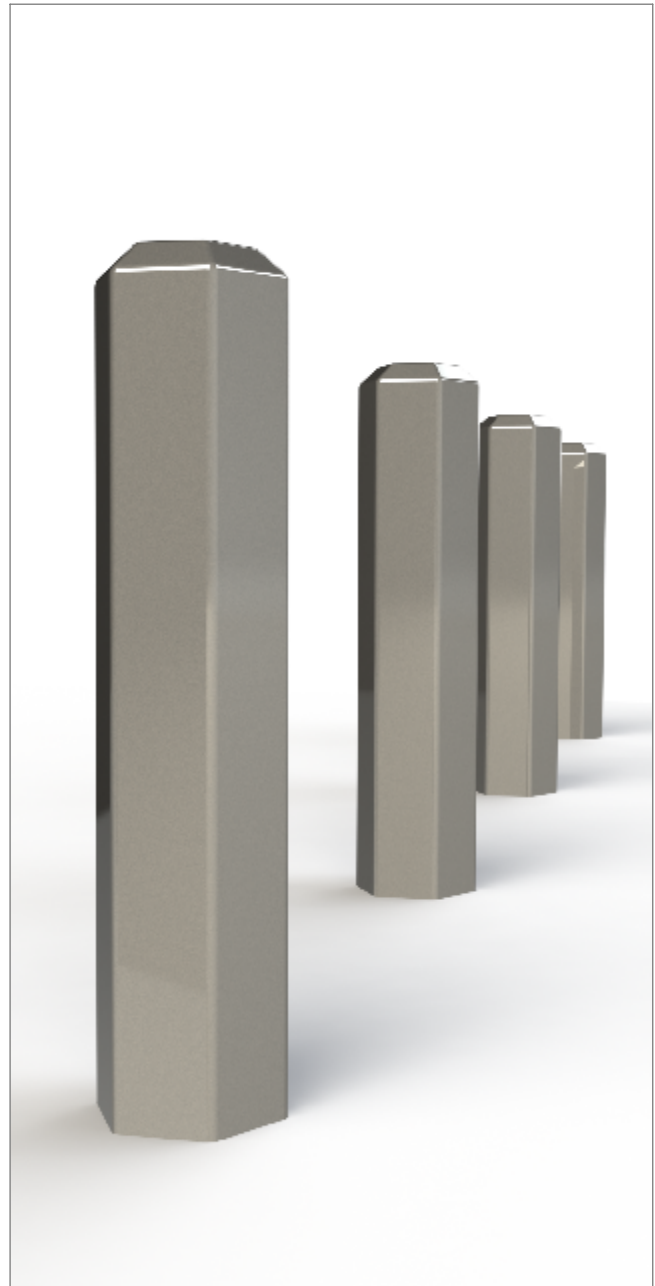


1:10



Bollards | ASF 007 Hexagonal Steel Bollard

Material:

Manufactured in 275 carbon steel from recycled sources

Dimension:

150mm section. Also available in 200mm section

Height:

Bollards are manufactured either 1200mm long (900mm above ground) or 1500mm long (1000mm above ground) All other bollard sizes are available if required

Standard Finish:

Acid etched, zinc rich primed and polyester powder coated

Optional Finish:

Bollards can be polyester powder coated, nylon coated or wet painted

Ram Raid Options:

Bollards can be manufactured with inner heavy duty steel inserts or with loose cap for concrete infill

Visibility Bands:

Retro reflective self-adhesive visibility bands can be applied. Wet painted and powder coated bands are also available

Bespoke Options:

Bollards can be manufactured to base plate fix, or be adapted to accept chains, rails or panels. Bollards can be made to be removable, or to fold down onto the ground or into a trough. Bollards can be adapted to make cycle stands, barriers etc. Door stoppers or door catches can be added.